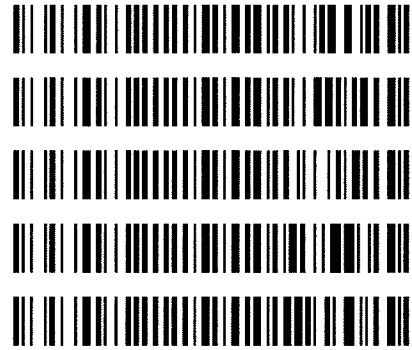




Worklist: 1521

<u>LAB CASE</u>	<u>ITEM</u>	<u>TASK ID</u>	<u>DESCRIPTION</u>
C2017-0146	1	75817	AM 3 Urine Carboxy-THC
C2017-0149	1	75818	AM 3 Urine Carboxy-THC
C2017-0154	1	75819	AM 3 Urine Carboxy-THC
C2017-0185	2	75821	AM 3 Urine Carboxy-THC
C2017-0197	1	75820	AM 3 Urine Carboxy-THC



Area Percent Report

Data Path : D:\DATA\2017\2-2-17a Gen Drug\
 Data File : 02301041.D
 Acq On : 03 Feb 2017 10:25
 Operator :
 Sample : BRC3
 Misc : AM 3: lot 68430
 ALS Vial : 23 Sample Multiplier: 1

Integration Parameters: autoint1.e
 Integrator: ChemStation

Method : D:\DATA\2016\852016a ta\psilocyn .D\TOXI-A 10115.M
 Title :

Signal : EIC Ion 371.00 (370.70 to 371.70): 02301041.D\data.ms

peak #	R.T. min	first scan	max scan	last scan	PK TY	peak height	corr. area	corr. % max.	% of total
1	3.903	14	23	30	PV	12704	197537	14.62%	11.909%
2	4.697	154	170	195	BB	77893	<u>1351541</u>	100.00%	81.479%
3	4.913	199	210	227	BB	6036	109672	8.11%	6.612%

Sum of corrected areas: 1658750

Signal : EIC Ion 473.00 (472.70 to 473.70): 02301041.D\data.ms

peak #	R.T. min	first scan	max scan	last scan	PK TY	peak height	corr. area	corr. % max.	% of total
1	4.699	162	170	192	VB	33702	<u>626668</u>	100.00%	52.129%
2	4.915	202	211	222	BV 2	4110	74699	11.92%	6.214%
3	5.182	249	260	281	BB	24515	500778	79.91%	41.657%

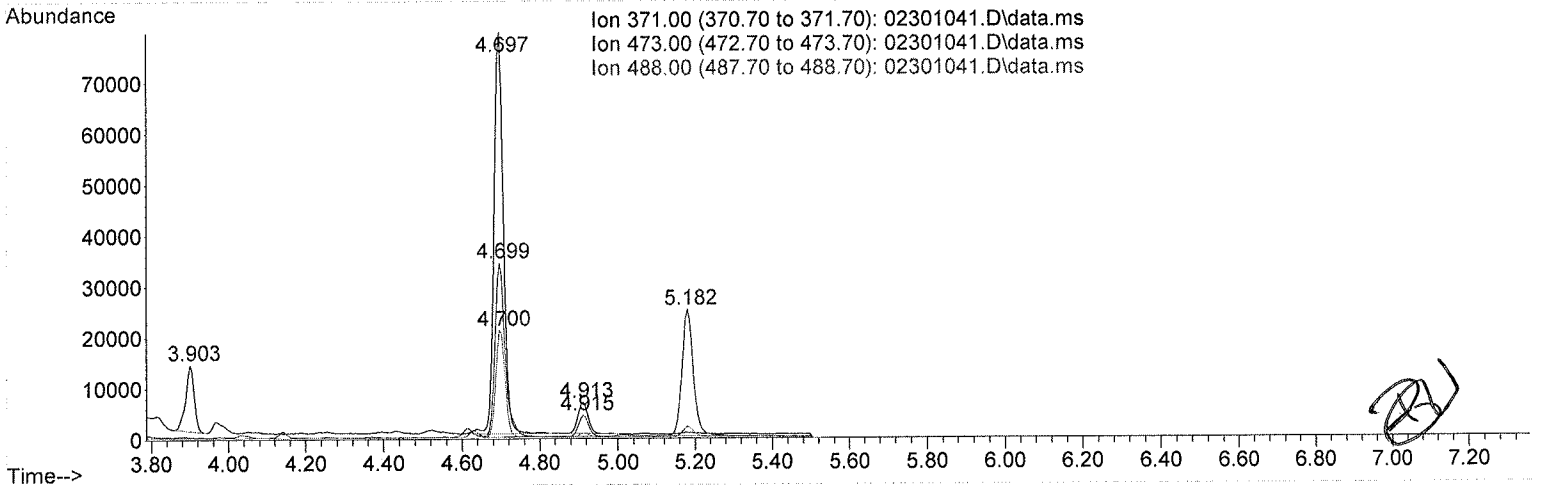
Sum of corrected areas: 1202145

Signal : EIC Ion 488.00 (487.70 to 488.70): 02301041.D\data.ms

peak #	R.T. min	first scan	max scan	last scan	PK TY	peak height	corr. area	corr. % max.	% of total
1	4.700	164	171	180	VV	20728	<u>351311</u>	100.00%	100.000%

Sum of corrected areas: 351311

TOXI-A 10115.M Fri Feb 03 13:26:46 2017



[Handwritten signature]

Area Percent Report

Data Path : D:\DATA\2017\2-2-17a Gen Drug\
 Data File : 02201040.D
 Acq On : 03 Feb 2017 10:15
 Operator :
 Sample : NCMJ
 Misc : AM 3:Neg Lot 12517
 ALS Vial : 22 Sample Multiplier: 1

Integration Parameters: autoint1.e
 Integrator: ChemStation

Method : D:\DATA\2016\852016a ta\psilocyn .D\TOXI-A 10115.M
 Title :

Signal : EIC Ion 371.00 (370.70 to 371.70): 02201040.D\data.ms

peak #	R.T. min	first scan	max scan	last scan	PK TY	peak height	corr. area	corr. % max.	% of total
1	3.817	3	7	17	PH 2	25044	553758	43.37%	19.024%
2	3.904	17	23	31	VV	86215	1276817	100.00%	43.864%
3	3.986	31	38	47	VV	11335	302798	23.72%	10.402%
4	4.079	47	55	65	VV	14306	373508	29.25%	12.831%
5	4.424	111	120	127	VV	8999	225006	17.62%	7.730%
6	4.635	152	159	165	VV 2	4307	90474	7.09%	3.108%
7	4.703	165	171	188	VV	3261	88520	6.93%	3.041%

Sum of corrected areas: 2910880

Signal : EIC Ion 473.00 (472.70 to 473.70): 02201040.D\data.ms

peak #	R.T. min	first scan	max scan	last scan	PK TY	peak height	corr. area	corr. % max.	% of total
1	4.615	131	155	165	PV 2	4448	102688	100.00%	100.000%

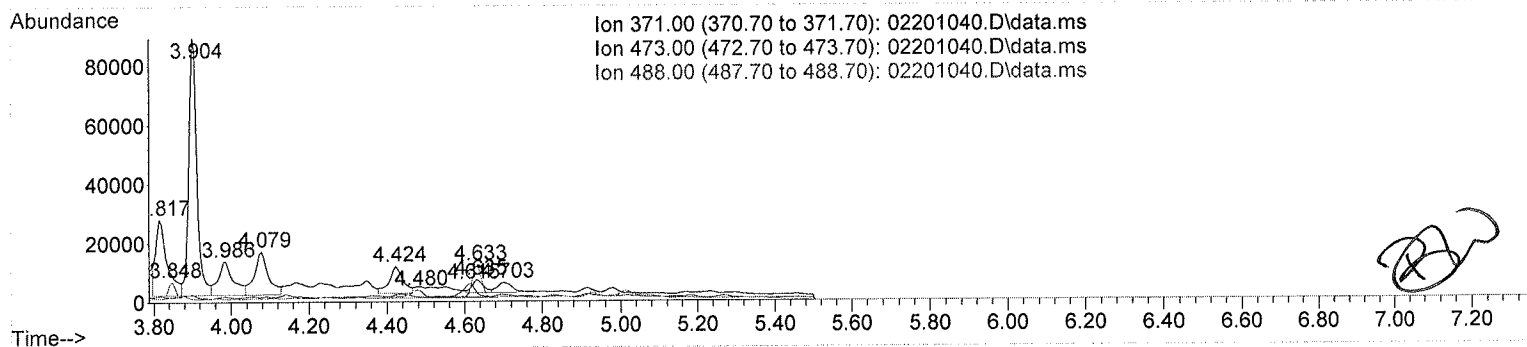
Sum of corrected areas: 102688

Signal : EIC Ion 488.00 (487.70 to 488.70): 02201040.D\data.ms

peak #	R.T. min	first scan	max scan	last scan	PK TY	peak height	corr. area	corr. % max.	% of total
1	3.848	7	12	17	BV	5061	63398	33.20%	19.270%
2	4.480	110	130	139	BV 3	2673	74628	39.08%	22.683%
3	4.633	139	158	166	VV 2	10862	190981	100.00%	58.048%

Sum of corrected areas: 329008

TOXI-A 10115.M Fri Feb 03 13:26:29 2017



[Handwritten signature]

Area Percent Report

Data Path : D:\DATA\2017\2-2-17a Gen Drug\
 Data File : 02101052.D
 Acq On : 03 Feb 2017 12:07
 Operator :
 Sample : PCMJ
 Misc : AM 3: lot FE03121501 WS in Neg Lot 12517
 ALS Vial : 21 Sample Multiplier: 1

Integration Parameters: autoint1.e
 Integrator: ChemStation

Method : D:\DATA\2016\852016a ta\psilocyn .D\TOXI-A 10115.M
 Title :

Signal : EIC Ion 371.00 (370.70 to 371.70): 02101052.D\data.ms

peak #	R.T. min	first scan	max scan	last scan	PK TY	peak height	corr. area	corr. % max.	% of total
1	3.816	3	6	16	PH 2	19393	442505	39.63%	15.603%
2	3.902	16	22	31	VV	77552	1116461	100.00%	39.367%
3	3.985	31	38	47	VV	7980	220233	19.73%	7.766%
4	4.076	47	55	64	VV	11072	281768	25.24%	9.935%
5	4.422	111	119	127	VV	7359	169367	15.17%	5.972%
6	4.634	152	158	163	VV	4018	79678	7.14%	2.810%
7	4.695	163	170	187	VV	29529	<u>525992</u>	47.11%	18.547%

Sum of corrected areas: 2836004

Signal : EIC Ion 473.00 (472.70 to 473.70): 02101052.D\data.ms

peak #	R.T. min	first scan	max scan	last scan	PK TY	peak height	corr. area	corr. % max.	% of total
1	4.697	163	170	189	PV	12352	<u>218189</u>	100.00%	100.000%

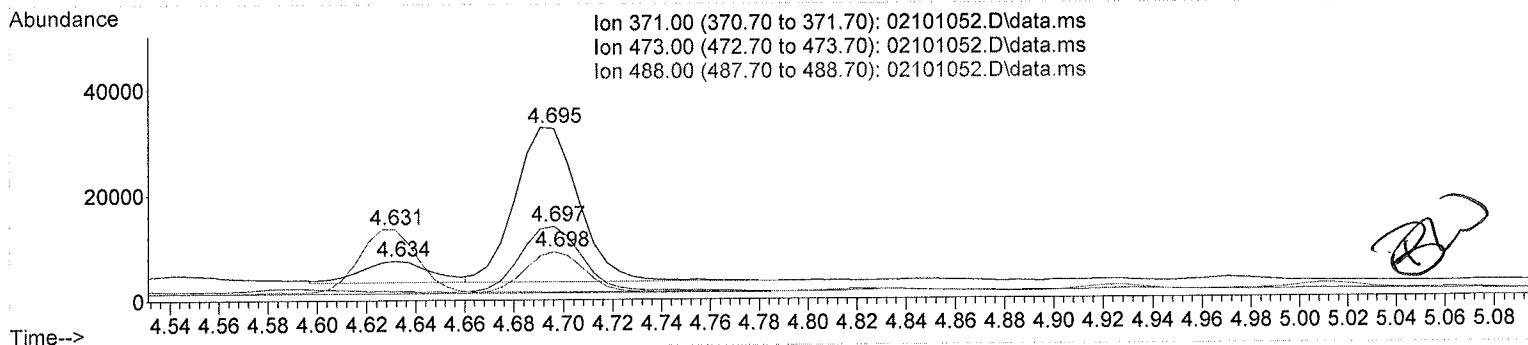
Sum of corrected areas: 218189

Signal : EIC Ion 488.00 (487.70 to 488.70): 02101052.D\data.ms

peak #	R.T. min	first scan	max scan	last scan	PK TY	peak height	corr. area	corr. % max.	% of total
1	3.847	6	12	27	BV	4936	81488	39.29%	19.199%
2	4.631	139	158	165	VV	12289	207380	100.00%	48.860%
3	4.698	165	170	186	VV	7725	<u>135571</u>	65.37%	31.941%

Sum of corrected areas: 424439

TOXI-A 10115.M Fri Feb 03 13:26:09 2017



Ion 371.00 (370.70 to 371.70): 02101052.D\data.ms
 Ion 473.00 (472.70 to 473.70): 02101052.D\data.ms
 Ion 488.00 (487.70 to 488.70): 02101052.D\data.ms

Area Percent Report

Data Path : D:\DATA\2017\2-2-17a Gen Drug\
 Data File : 02101039.D
 Acq On : 03 Feb 2017 10:06
 Operator :
 Sample : PCMJ
 Misc : AM 3: lot FE03121501 WS in Neg Lot 12517
 ALS Vial : 21 Sample Multiplier: 1

Integration Parameters: autoint1.e
 Integrator: ChemStation

Method : D:\DATA\2016\852016a ta\psilocyn .D\TOXI-A 10115.M
 Title :

Signal : EIC Ion 371.00 (370.70 to 371.70): 02101039.D\data.ms

peak #	R.T. min	first scan	max scan	last scan	PK TY	peak height	corr. area	corr. % max.	% of total
1	3.817	3	7	17	PH 2	21515	484574	55.25%	15.960%
2	3.903	17	23	31	VV	57943	877017	100.00%	28.886%
3	3.985	31	38	47	VV	9621	270029	30.79%	8.894%
4	4.078	47	55	64	VV	12432	329161	37.53%	10.841%
5	4.424	111	119	127	VV	7479	207045	23.61%	6.819%
6	4.635	152	159	164	VV 2	3799	83789	9.55%	2.760%
7	4.697	164	170	194	VV	36378	<u>699902</u>	79.80%	23.052%
8	4.912	203	210	218	PV 2	4599	84657	9.65%	2.788%

Sum of corrected areas: 3036174

Signal : EIC Ion 473.00 (472.70 to 473.70): 02101039.D\data.ms

peak #	R.T. min	first scan	max scan	last scan	PK TY	peak height	corr. area	corr. % max.	% of total
1	4.613	144	155	164	BV 2	13944	265397	89.11%	42.422%
2	4.698	164	170	190	VV	15549	<u>297835</u>	100.00%	47.607%
3	4.914	203	210	221	PV 2	3081	62381	20.94%	9.971%

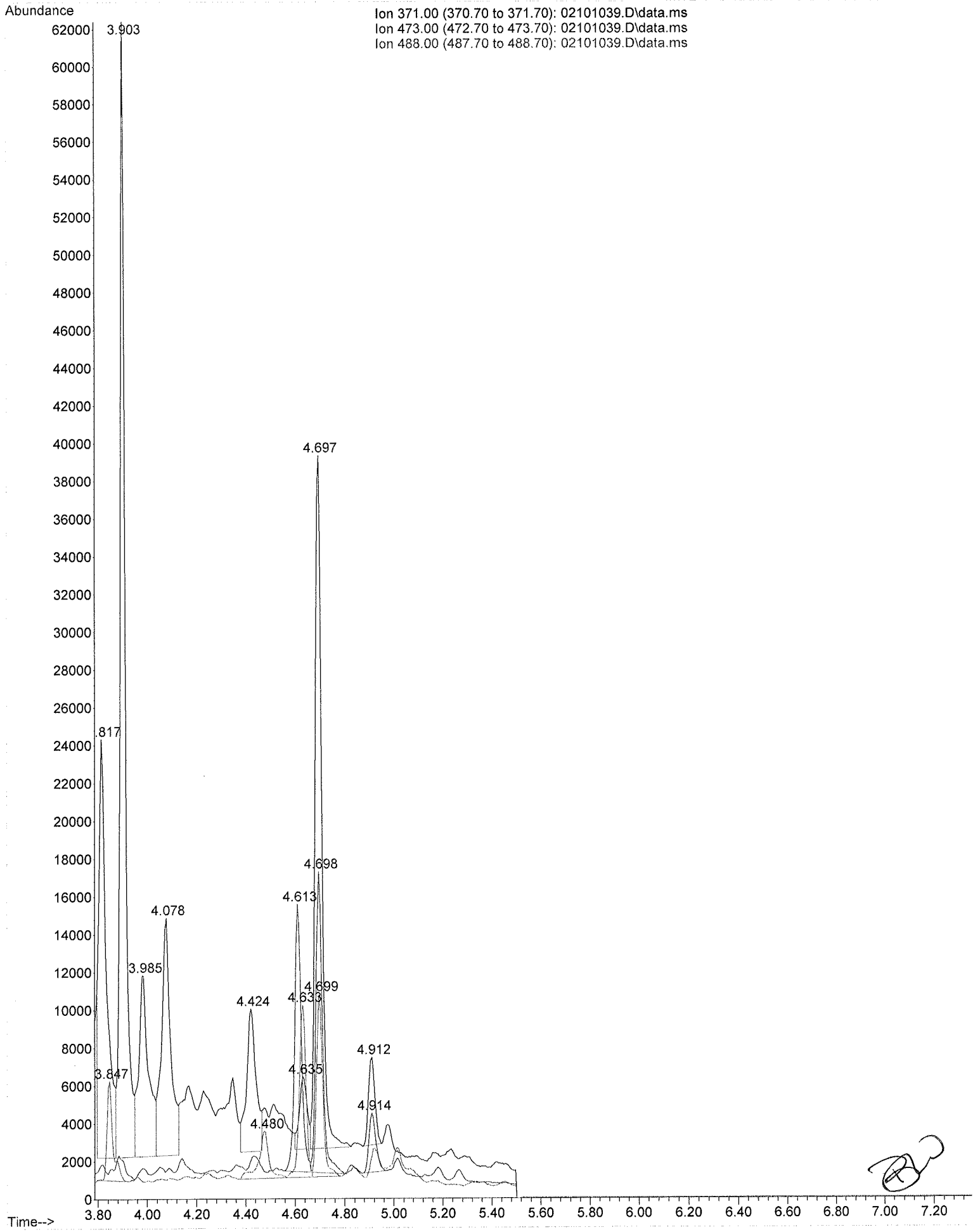
Sum of corrected areas: 625613

Signal : EIC Ion 488.00 (487.70 to 488.70): 02101039.D\data.ms

peak #	R.T. min	first scan	max scan	last scan	PK TY	peak height	corr. area	corr. % max.	% of total
1	3.847	3	12	27	BV	5172	86437	49.65%	17.179%
2	4.480	109	130	146	BV 3	2521	72512	41.65%	14.412%
3	4.633	146	158	165	VV 2	9000	170088	97.69%	33.805%
4	4.699	165	171	187	VV	9358	<u>174110</u>	100.00%	34.604%

Sum of corrected areas: 503146

TOXI-A 10115.M Fri Feb 03 13:25:47 2017



2.4.4 Carboxy-THC QC Calculations

Run Date: 2/3/2017

Case Calculations:

Lab Case #: BRC3

EIC Ion 371 Corr. Area:	<u>1351541</u>	473:371 Ratio:	<u>0.464</u>
EIC Ion 473 Corr. Area:	<u>626668</u>	488:371 Ratio:	<u>0.260</u>
EIC Ion 488 Corr. Area:	<u>351311</u>		

Quality Control Calculations:

Retention Time acceptable range: 4.597 to 4.795

	<i>1st ctrl</i>	<i>2nd ctrl</i>
EIC Ion 371 Corr. Area:	<u>525992</u>	<u>699902</u>
EIC Ion 473 Corr. Area:	<u>218189</u>	<u>297835</u>
EIC Ion 488 Corr. Area:	<u>135571</u>	<u>174110</u>

Approximate minimum corrected area of 371 ion: ~ **105198**

		<i>Ratio of 473:371</i>			
	<i>1st ctrl</i>		<i>2nd ctrl</i>	<i>avg.</i>	
	<u>0.415</u>		<u>0.426</u>	<u>0.420</u>	
<i>Accepted Range</i> (+/- 20%)	<u>0.336 - 0.504</u>				
		<i>Ratio of 488:371</i>			
	<i>1st ctrl</i>		<i>2nd ctrl</i>	<i>avg</i>	
	<u>0.258</u>		<u>0.249</u>	<u>0.253</u>	
<i>Accepted Range</i> (+/- 20%)	<u>0.203 - 0.304</u>				

Carboxy-calculation sheet
Revision 0 effective date 10/23/13
Issuing authority: Quality Manager

